



3347 U.S. RT 42, Spring Valley, OH 45370

844-TRKHAND (844-875-4263)

[WWW.Trackhandler.com](http://WWW.Trackhandler.com)

dave@trackhandler.com



## Taking a track off

Tools you will need:



Armadillo mat



Hammerhead & Power Bar



Beaver Tail and tie strap

### Step 1 – Placement of the Armadillo

Use the Armadillo in either the lower or upper part of the track depending on the easiest access to the track. In some cases, the mat can be used in the lower side. Remember, you can take the track off in forward or reverse therefore the mat can go through on the top or bottom. (see pictures below)



Lower Position



Upper Position



**Correct placement**



**Correct placement**



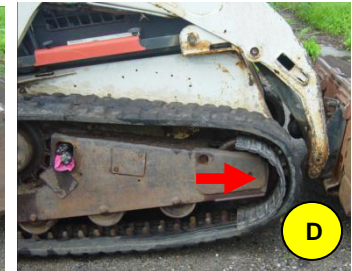
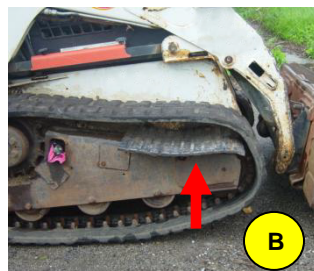
**Incorrect placement**

The Armadillo mat should of course be inside the track and not outside the track as shown above. You must make sure that the Armadillo mat is unobstructed as it is forwarded through the frame & track assembly. If the mat is too close to the frame of the machine, it may get caught by other parts of the assembly, and potentially damage the Armadillo mat.

## Step 2 – Advancing the Armadillo

This next step can be done by one man but it will require you to get in the machine and move the track forward or backwards and then climb back out of the machine. Two men will of course make this step faster.

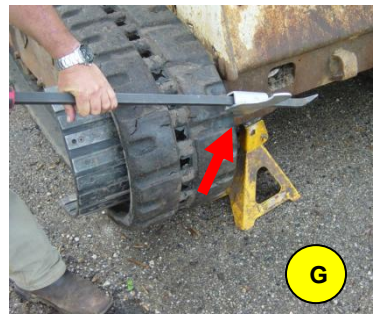
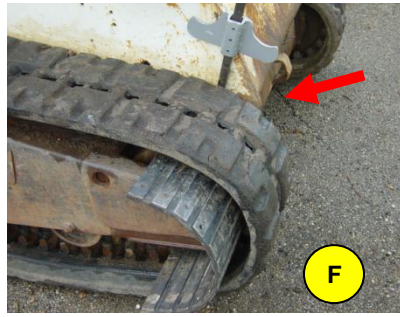
Advancing the Armadillo mat without the use of feeding or supporting is key to safety and ease of the tool. Allow the cogs of the track to catch the mat and advance the mat through the assembly (A & B). Slowly advance the mat as shown below. (E)



Continue feeding the Armadillo mat until all cogs are clear of the front idler like picture (C & D)

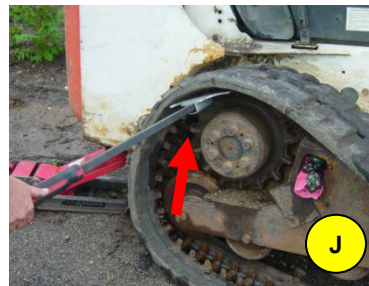
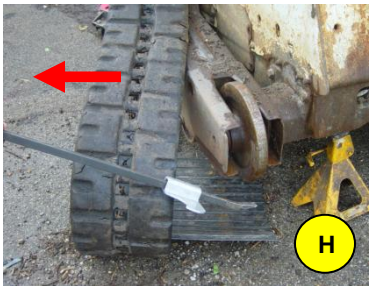
On some tight tracks, it may be best to advance the mat past the 12:00 position (E) to allow the pry bar assembly access as shown below.





In pictures E & F, you are moving the cogs off the idler enough so that they will disengage. Leverage is the key to this step and every machine will have “sweet spots” to ease the removal process.

After the tension is released and the track is disengaged off the idler, use the edge of the Hammerhead to pull the track towards you. The track should pull off with a quick tug (G). The track will be off the front of the machine (H).



After the front idler is free, a simple pop of the Hammerhead in an upward motion will allow the track and the cogs to separate thus releasing the track from the drive gear (H). The track should quickly pull off now (L).



After the track has been removed, this is a good time to assess other moving parts per your machines owner’s manual (M).

## **Congratulations!!!**

## **You successfully removed a track in record time with added safety.**