



3347 U.S. RT 42, Spring Valley, OH 45370

844-TRKHAND (844-875-4263)

WWW.Trackhandler.com

dave@trackhandler.com



Preparing machine for track replacement

This is a very critical step in the track removal or track replacement process. **SAFETY** should always take top priority when lifting the machine off the ground. You must make sure the machine is secure and only off the ground 3" - 4". Only one side of the machine should be slightly off the ground during this process. Some machines may require more clearance than that, but you should always check your machine owner's manual for instructions. There will also be a difference of being on a job site versus a controlled environment with a level surface.



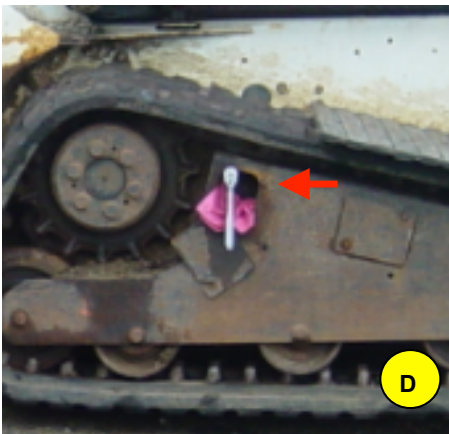
The jack stand or something similar is under front of the machine on the side that you want to change the track (A).



The jack or something similar is under the rear of the machine on the same side that you want to change the track (B).



The machine has 2 supports placed securely under the front and back of the machine on the same side as the track that you will be working on. Notice the track is only 3"- 4" off the ground (C). The opposite side track is firmly on the ground. Always make sure you're the machine is properly supported.



Before any tracks can be removed or replaced, the tension must be greatly reduced on the tracks. To do this, you will need to remove the plug on the tension mechanism which will allow the grease to exit the cylinder and loosen the track. We like placing several paper towels in this area to catch the grease (D). You will add new grease after the track has been changed which will add tension the track.



The machine and work area is now ready for the new tracks (E).